







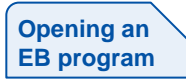



Millenium 3 & MTP6/50

Quick Start

This tool is designed to quickly and easily commission the MTP6/50 screen & EB software in connection with Millenium 3



All tabs in this document contain links that allow to jump from chapter to chapter.

- Hard- and software used 
- Software installation 
- Driver installation 
- Connecting the hardware for program transfer 
- How to open an EB program 
- Program transfer 
- Connecting the hardware for use 
- Program example 

Hardware and software used

Software

EB

≥ Version 4.64

ClS M3

≥ Version 2.5 AC7

Hardware



- 1 Millenium3 24VDC
Hardware version ≥ 1.0.03



- 1 screen MTP6/50

Cables



1 mini USB cable



1 serial cable Millenium3



1 cable MTP6/50 ↔ M3

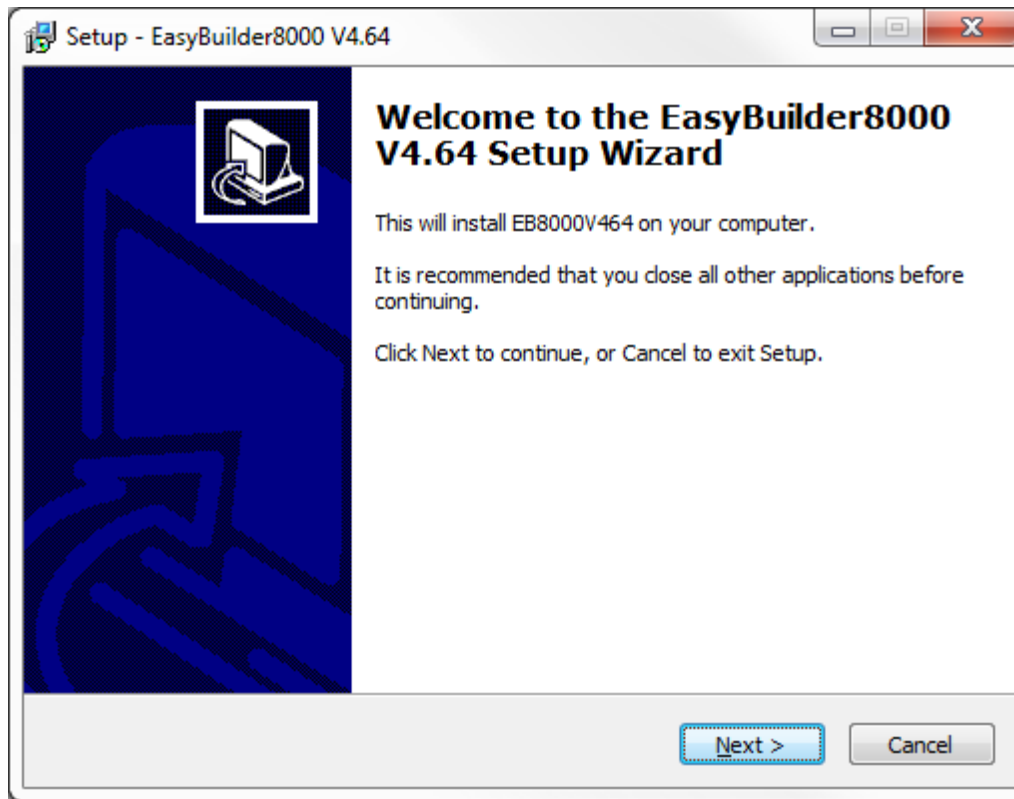
• Installing the EB software



- Double click *setup.exe* in the *EB Software V4.64* folder to launch the software installation. (only available in English)
- If this window should open click *Run*



- Installing the EB software



We recommend to restart the computer
after software installation



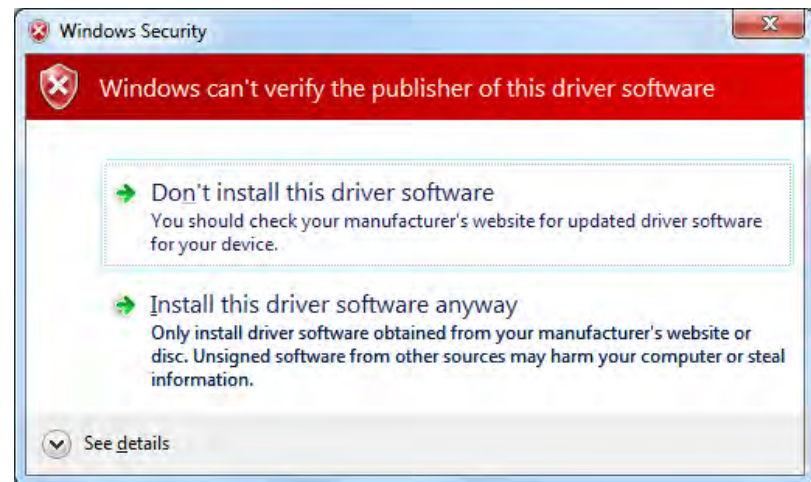
- EB USB driver installation

- Win7 32bit and 64bit

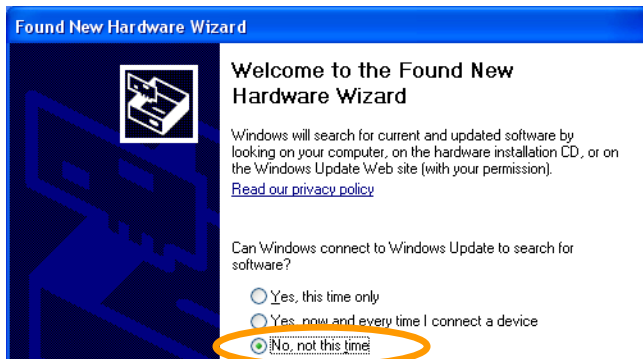
- The driver is installed during software installation and activated for the individual USB port when the screen is connected to it
 - If you see this window at the end of the installation click on *Install anyway*

- XP

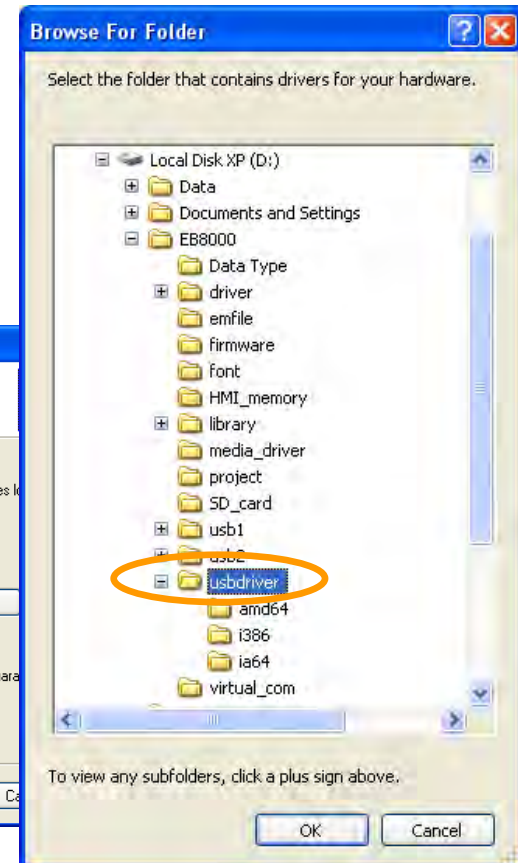
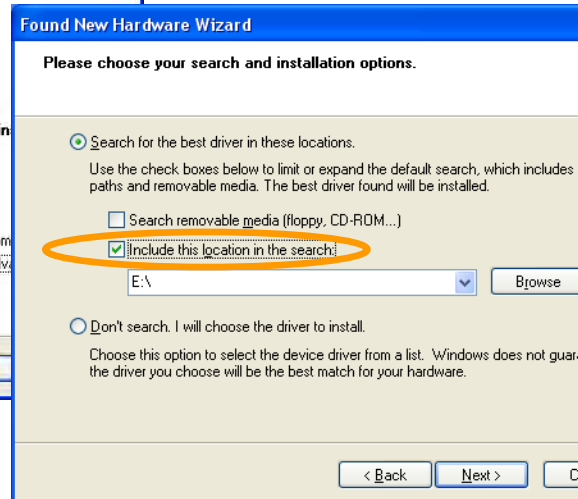
- see following page



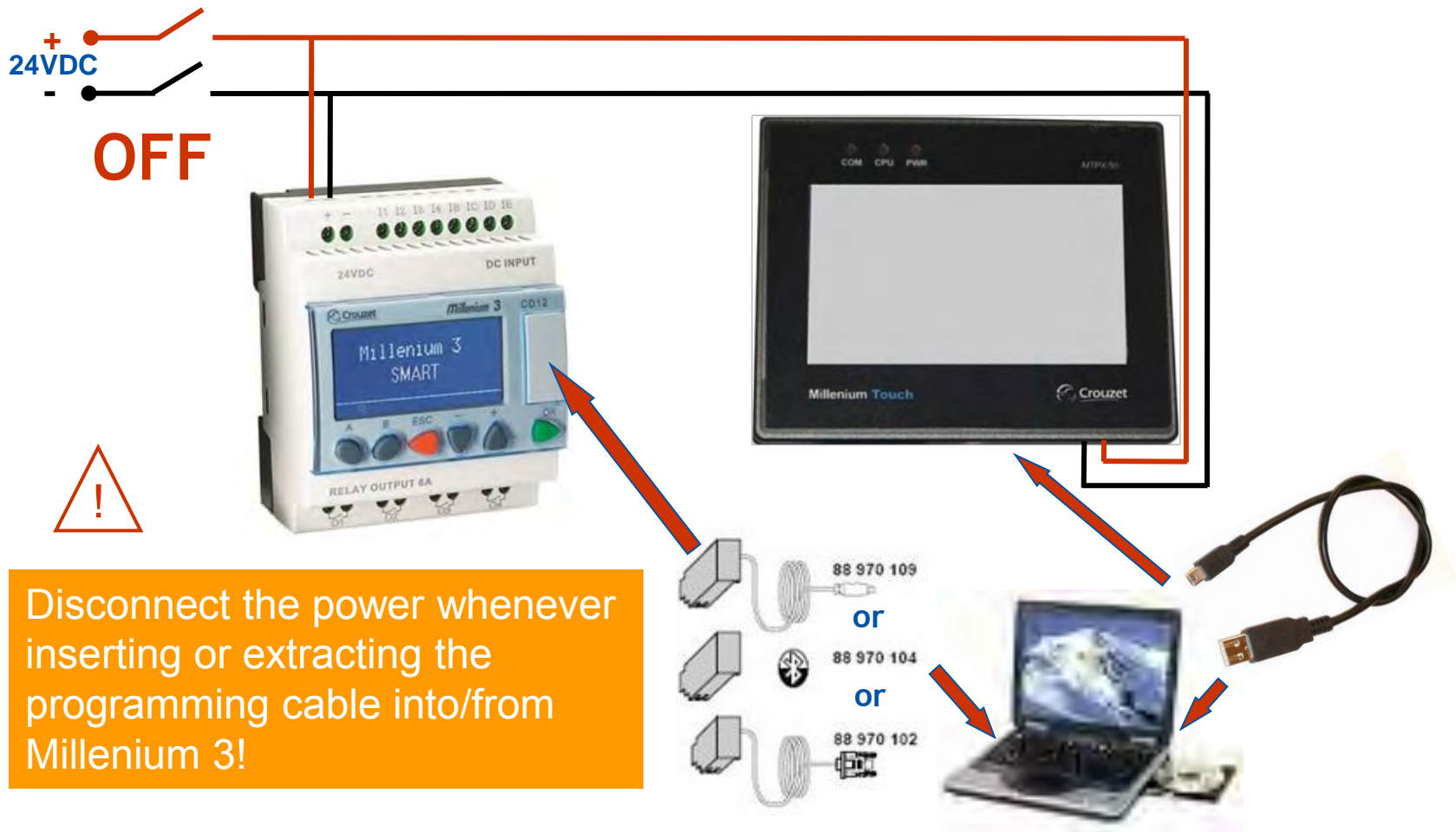
• EB USB driver installation under XP



- Select *Install from a specific location* and browse to *usbdriver* in the *EB8000* folder
- Then click *Next*



• Wiring for program transfer



• Program transfer



• How to open an EB program

The touchscreen programs that are linked to the Quick Start, placed on the CD, downloaded from our website or are sent by email have either *.cmp* or *.xob* extensions.

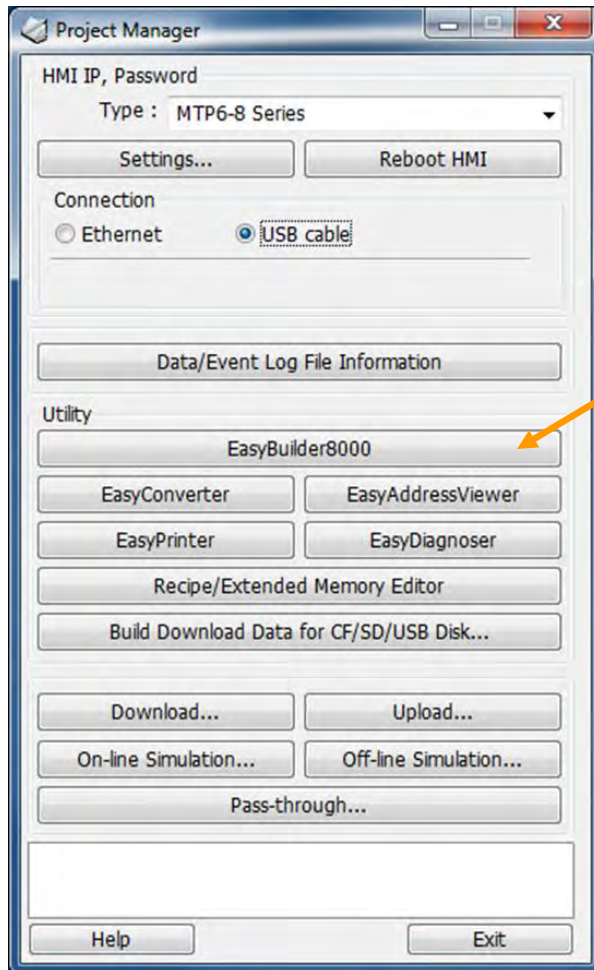
⇒ *.cmp* are compressed files that include libraries

⇒ *.xob* are compiled files

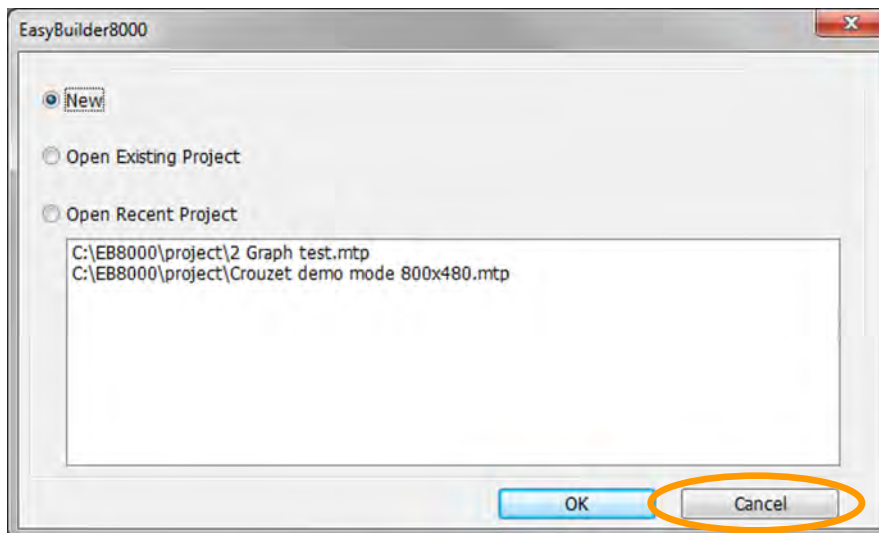
In order to open these programs the files have to be treated first.



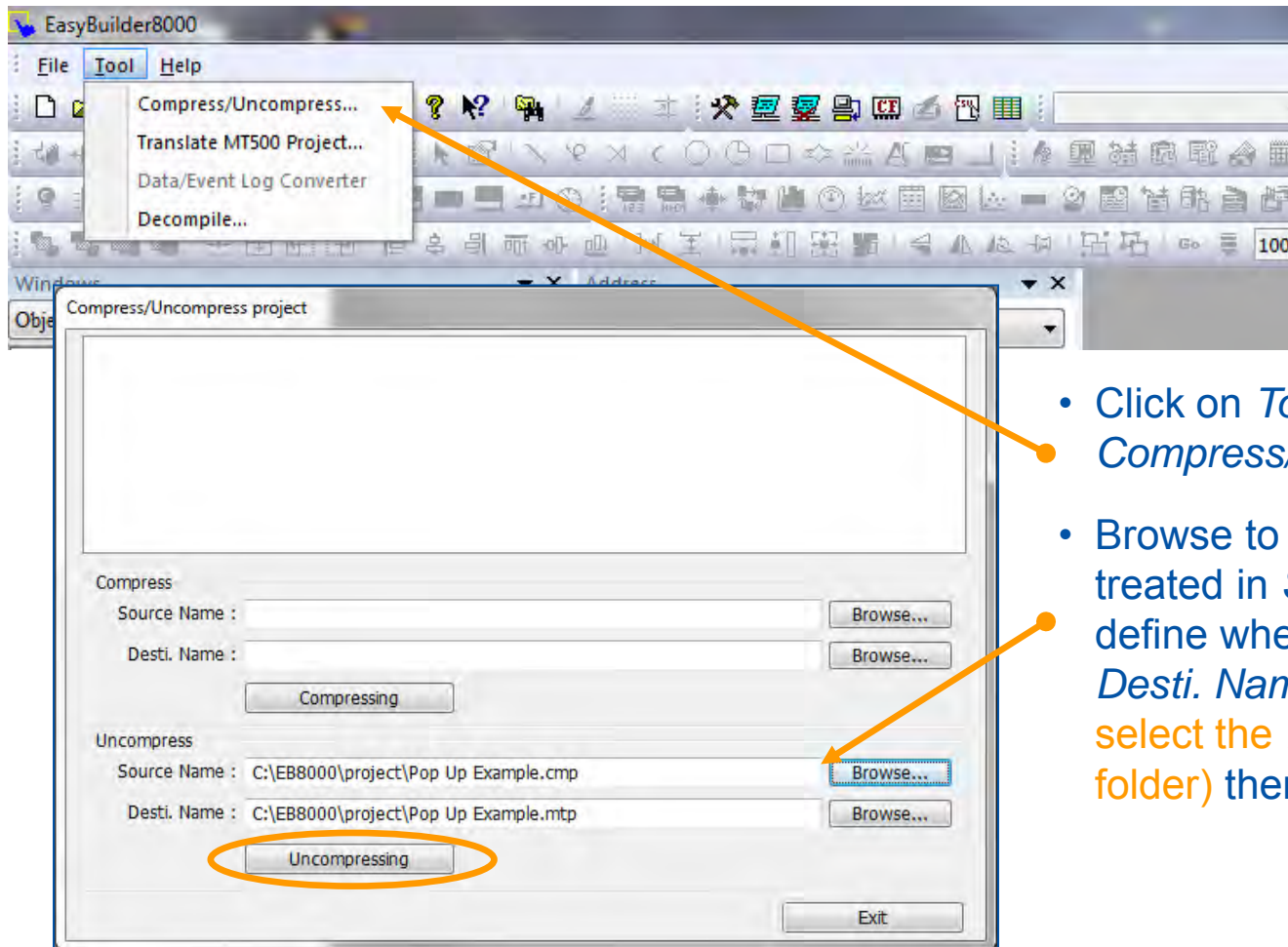
• How to open an EB program



- Click on *Easy Builder*
- In the window that opens click *Cancel*

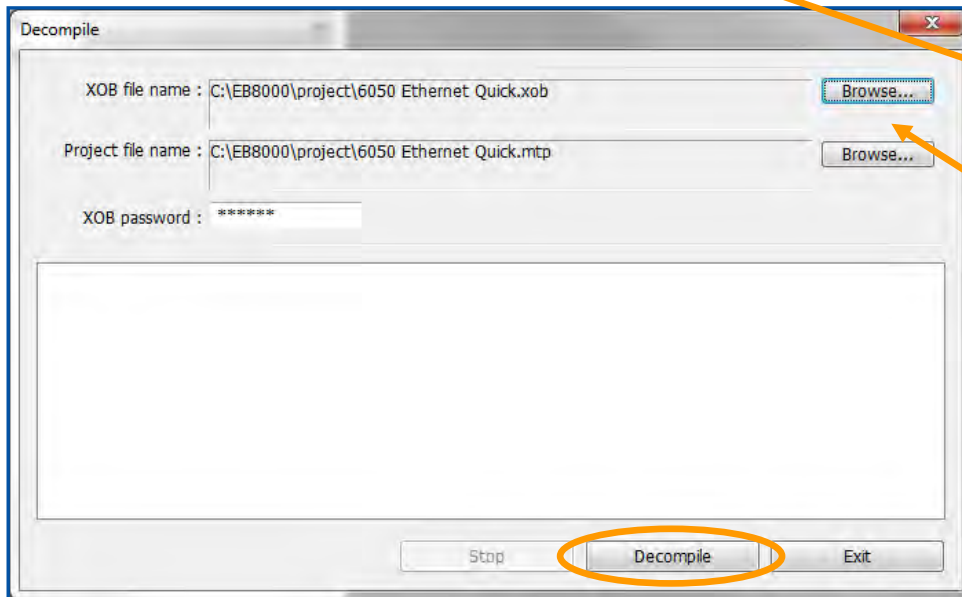


• How to open a compressed .cmp file



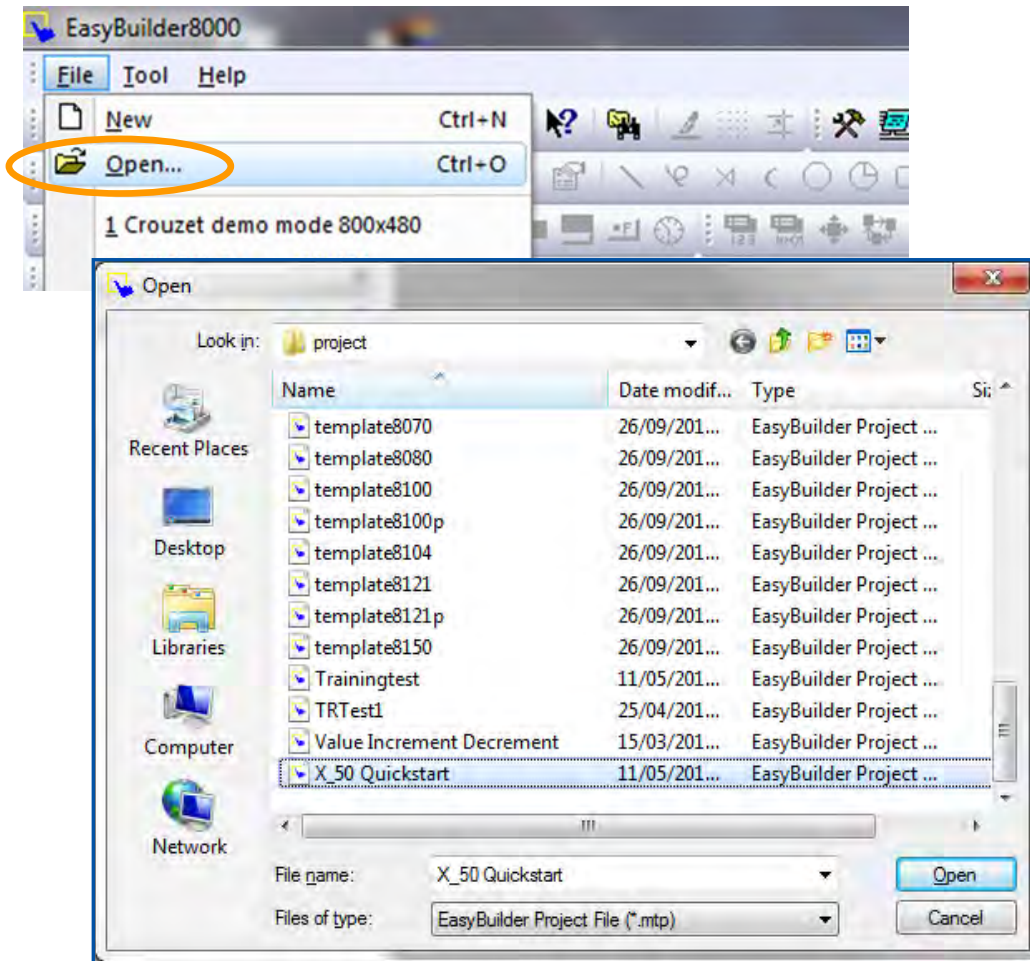
- Click on *Tool* and select *Compress/Uncompress*
- Browse to the file that is to be treated in *Source Name* and define where it is to be saved in *Dest. Name*, (we recommend to select the *EB8000/project* default folder) then click *Uncompressing*

• How to open a compiled .xob file



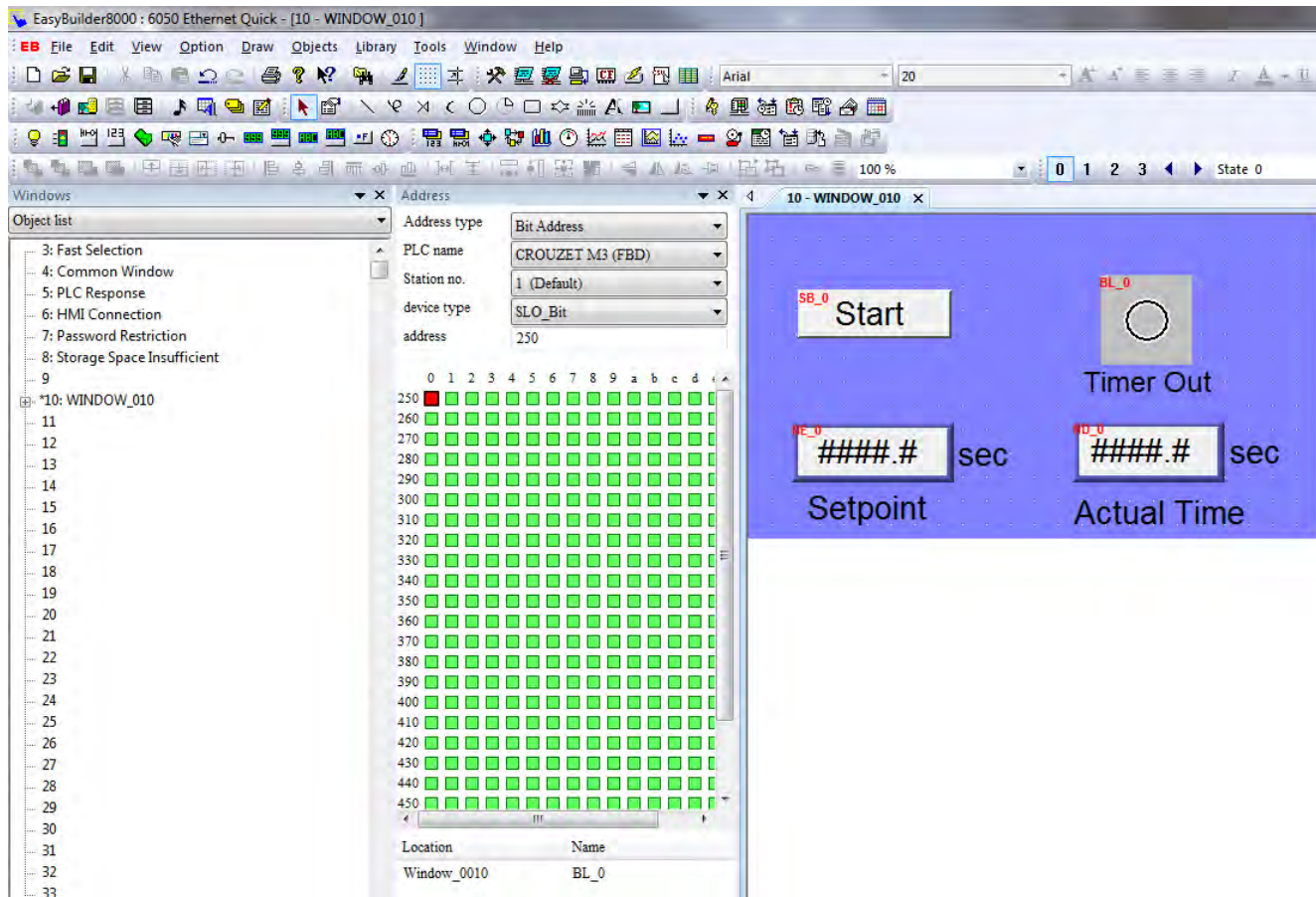
- Click on *Tool* and select *Decompile*
- Browse to the file that is to be treated in *XOB file name* and define where it is to be saved in *Project file name* (we recommend to select the *EB8000/project* default folder), then click *Decompile*
- In case of a protected program enter the password before decompiling

• Program transfer PC \Rightarrow MTP6/50

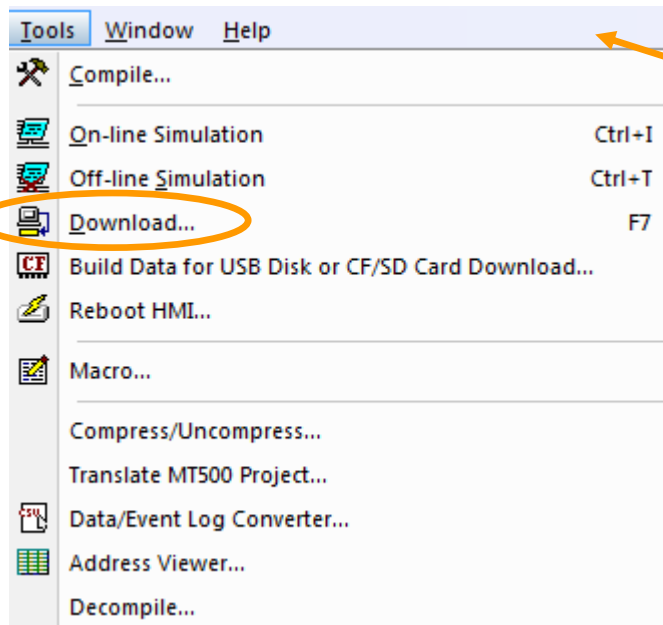
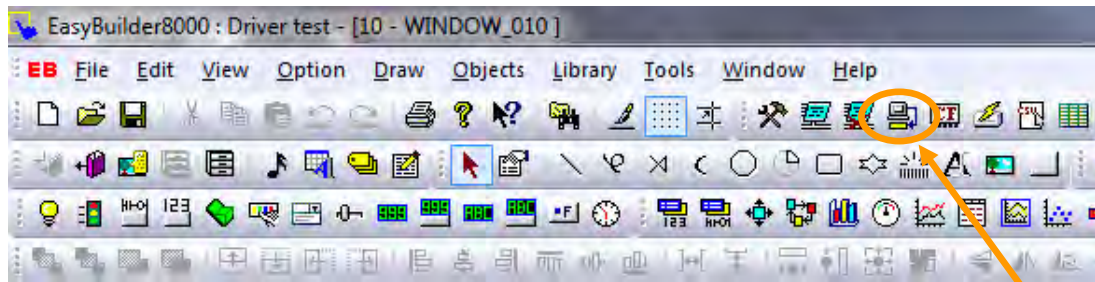


- Click *File / Open* and select the Quick Start program that you have just uncompressed
- Then click *Open*

• Program transfer PC \Rightarrow MTP6/50



• Program transfer PC \Rightarrow MTP6/50

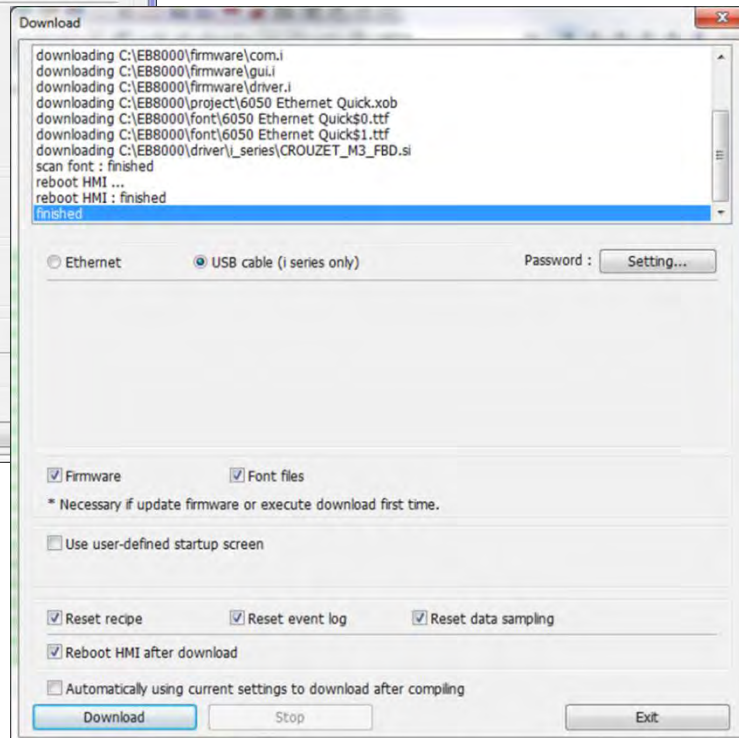
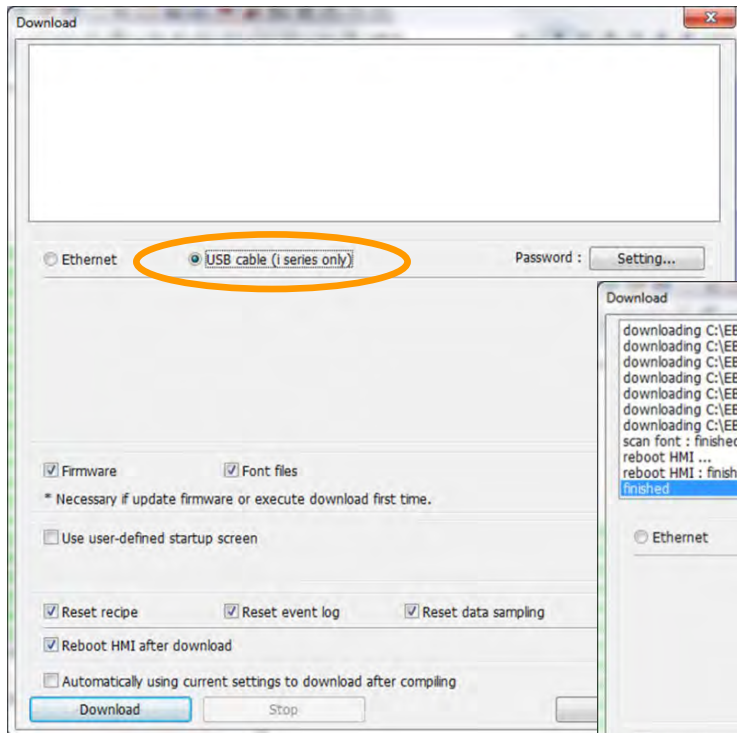


- Click on the icon *Download*
or
- open *Tools* and select *Download*

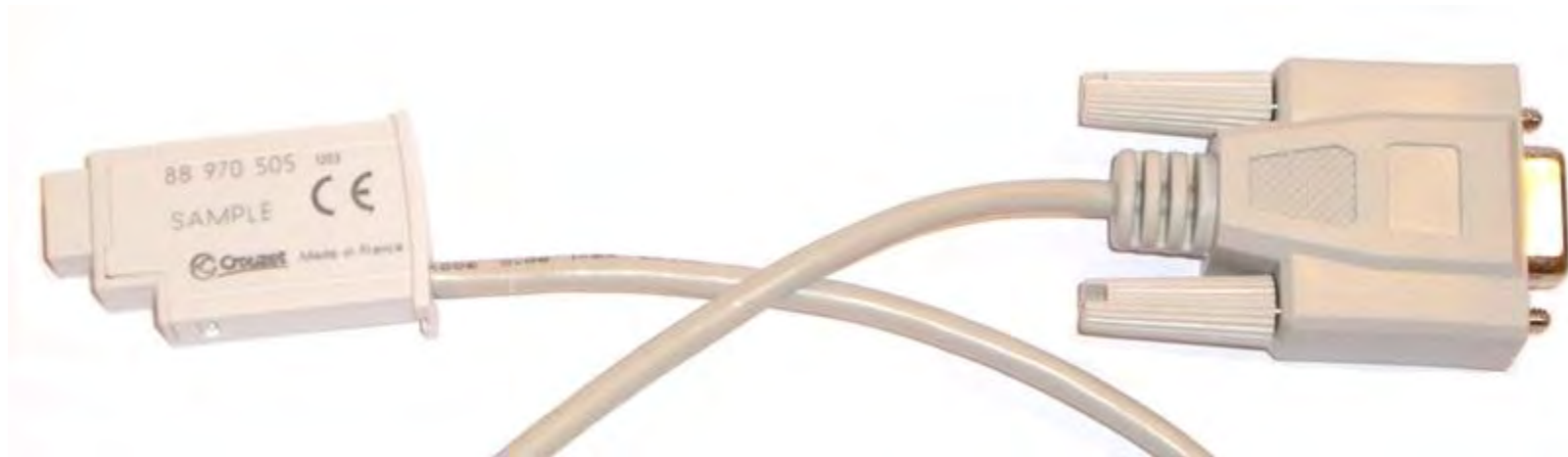
• Program transfer PC \Rightarrow MTP6/50



- In the window that opens select *USB cable* and click on *Download*
- Click *Exit* after download is finished



- The data exchange cable Millenium 3 \Leftrightarrow MTPX/50



• Wiring for use / data exchange



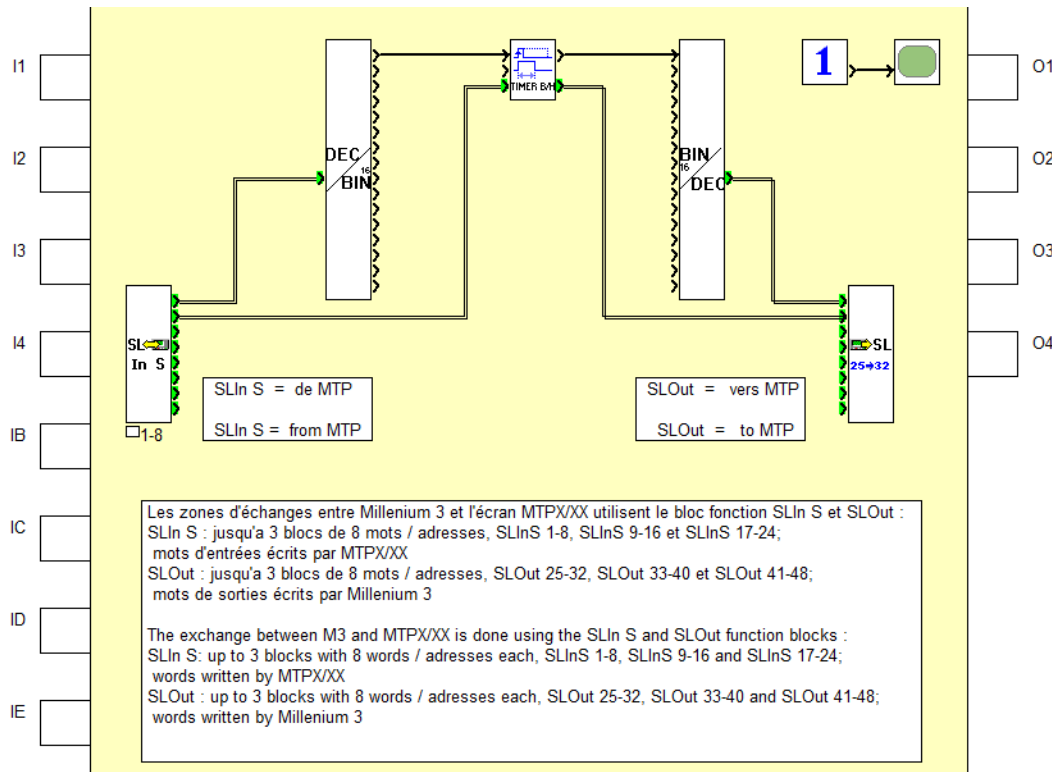
Connecting

Disconnect the power whenever inserting or extracting the Millennium3 – MTPX/50 data exchange cable!

Data exchange



• Commissioning a Millenium 3 – MTP6/50 program example



• Program description:

Read a bit (start timer) and a word (timer set point) from the MTP6/50

Write a bit (timer output) and a word (actual timer value) to the MTP6/50

• Attached programs:

M3: *MTPX_XX Quickstart.pm3*

MTP6/50: *X_50 Quickstart.xob*

Congratulations,
your have realized your first MTP6/50 – Millenium 3
communication.

More possibilities and details are described in the Tutorial.